



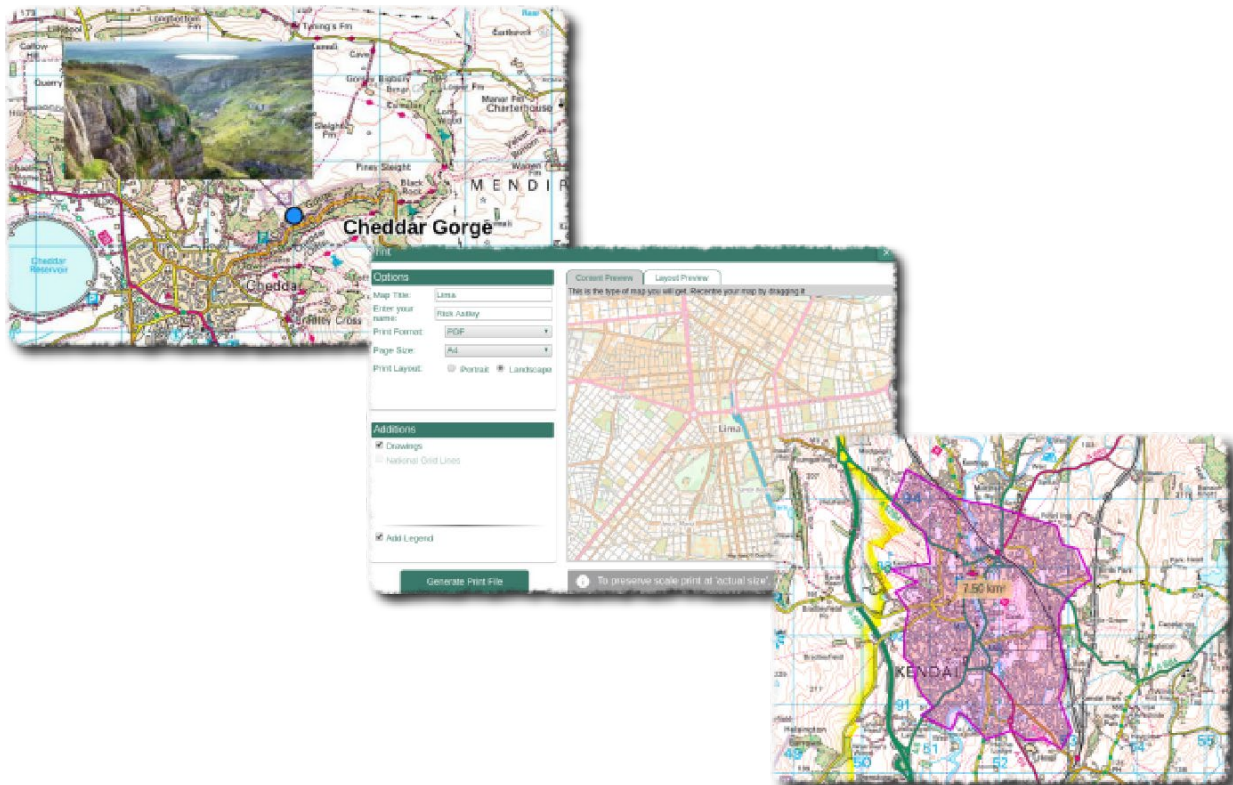
# Extreme Great Britain

## Facts about Great Britain

Paula Owens

# Geography Teaching Resource

Primary





## Contents

Digimap for Schools Geography Resources .....	3
Content and Curriculum Links.....	3
Introduction .....	4
Main activity.....	4
Tasks.....	4
Taking it further .....	4
Extreme Great Britain – Activity .....	5
Extreme Great Britain - Answers .....	6
Copyright.....	9
Acknowledgements.....	9





## Digimap for Schools Geography Resources

These resources are a guide for teachers to demonstrate to the whole class or direct individual students as appropriate. Each activity has several ideas within it that you can tailor to suit your class and pupils. Some resources contain worksheets for direct distribution to pupils.

### Content and Curriculum Links

Level	Context	Location
Primary	Facts about Great Britain	Various

Knowledge	Reading information for a map/locating places/adding markers and labels
Curriculum links (England)	Use the eight points of a compass, four-figure grid references, symbols and key (including the use of Ordnance Survey maps) to build knowledge of the United Kingdom
Curriculum links (Wales)	Identify and locate places and environments using maps. Use maps, imagery and ICT to find and present locational information
Scottish Curriculum for Excellence	Social Studies Outcomes: People, Place and Environment: SOC 2-14a





## Introduction

Ask pupils some questions about geographical extremes in Great Britain such as:

- What is the name and location of the highest mountain in Great Britain?
- Where in Great Britain has the coldest temperature been recorded?

This activity involves pupils matching answers with incomplete statements using reasoning and research skills. The maps in Digimap for Schools provides information about Great Britain at a range of scales. Researching information using the maps can aid independent enquiry and develop core knowledge.

## Main activity

Discuss with pupils what 'an extreme' might mean: longest, highest, busiest, fastest, coldest and so on, and find out if they can come up with any 'extreme facts' about Great Britain. Discuss the importance of location and how maps can give us information. Tell pupils their challenge is to match a given list of answers to a list of incomplete 'extreme facts' statements on the activity worksheet.

They could also do additional research to help them make up some 'extreme facts' of their own. Once finished, pupils have to choose their favourite extreme facts and add their locations to a map.

## Tasks

1. Open Digimap for Schools. Try to match the right words to the incomplete statements on the 'Extreme Great Britain' activity sheet. Use the maps to help you.
2. Choose some of your favourite 'extreme facts' and map their location.
  - a. Use the Search facility to find the location,
  - b. then select 'Add marker' from the Drawing Tools,
  - c. and then 'Add label' adding text for example, 'coldest temperature'.
  - d. Or you could add numbers to link the locations to the numbered statements on the sheet.

## Taking it further

Why not make a themed 'extreme facts' compilation such as those to do with 'weather'?





## Extreme Great Britain – Activity

Can you match the answers below to complete these facts about ‘Extreme Great Britain’? When you finish use Digimap for Schools to make a map showing the locations of some ‘Extreme’ facts. Can you add some of your own?

1. The highest mountain in Great Britain (GB) is:.....
2. The longest river in GB is:.....
3. The largest lake or loch in GB by surface area is:.....
4. The biggest lake or loch by volume in GB is:.....
5. The largest forest park in GB is:.....
6. The deepest freshwater lake or loch in GB is:.....
7. The largest natural cave entrance in GB can be found at:.....
8. The fastest train to run in GB left from:.....
9. The largest container port in GB is:.....
10. The northernmost point of GB is:.....
11. The southernmost settlement of GB:.....
12. The easternmost point of GB is:.....
13. The coldest ever temperature was recorded at:.....
14. The largest National Park in GB is:.....

Out Stack, Shetlands	Port of Felixstowe	Peak Cavern, Derbyshire	Loch Morar, Scotland	Ashford Station
Loch Ness, Scotland	Loch Lomond, Scotland	Galloway Forest, Scotland	Ben Nevis, Scotland	River Severn
St Agnes, Isles of Scilly	Lowestoft Ness, Suffolk	Cairngorms, Scotland	Braemar, Scotland	





## Extreme Great Britain - Answers

1. The highest mountain in Great Britain and the UK is **Ben Nevis**, Scotland. It is located at the western end of the Grampian Mountains in the Lochaber area of Scotland, close to the town of Fort William.

<http://ben-nevis.com/>

2. The longest river in Great Britain is **The River Severn** (Welsh: Afon Hafren), at about 354 kilometres.

[https://en.wikipedia.org/wiki/River\\_Severn](https://en.wikipedia.org/wiki/River_Severn)

3. **Loch Lomond** is the largest lake in Great Britain by surface area. It is 39 kilometres long and between 1.21 kilometres and 8 kilometres wide.

[https://en.wikipedia.org/wiki/Loch\\_Lomond](https://en.wikipedia.org/wiki/Loch_Lomond)

4. The biggest lake in Great Britain is **Loch Ness** a large, deep, freshwater loch in the Scottish Highlands extending for approximately 37 km (23 mi) southwest of Inverness. Loch Ness is the second largest Scottish loch by surface area at 56.4 km<sup>2</sup> after Loch Lomond, but due to its great depth, it is the largest by volume. It contains more fresh water than all the lakes in England and Wales combined.

[https://en.wikipedia.org/wiki/Loch\\_Ness](https://en.wikipedia.org/wiki/Loch_Ness)

5. **Galloway Forest** is Britain's largest forest park at three hundred square miles. The largest forest in England is Kielder Forest.

[https://en.wikipedia.org/wiki/Galloway\\_Forest\\_Park](https://en.wikipedia.org/wiki/Galloway_Forest_Park)

6. The deepest freshwater lake or loch in Great Britain and the British Isles is **Loch Morar** (Scottish Gaelic: Loch Mhòrair) a freshwater loch in Morar, Lochaber, Highland, Scotland. It has a maximum depth of 310 metres.





<http://www.lochmorar.org.uk/>

7. The **Peak Cavern**, in Derbyshire, is the largest natural cave entrance in Great Britain and the British Isles.

<https://peakcavern.co.uk/>

8. Fastest train in Great Britain ran on the Eurostar Line from **Ashford**. The train chosen for the attempt was Class 373/2 'Regional Eurostar' specially prepared with monitoring equipment and a ten per cent 'overspeed' facility. The train was driven by Alan Pears and had only around 70 journalists and engineers on board as it set off from Ashford to reach 208 m.p.h.

<https://ashfordintl.co.uk/trains>

[https://en.wikipedia.org/wiki/List\\_of\\_high-speed\\_trains](https://en.wikipedia.org/wiki/List_of_high-speed_trains)

[https://en.wikipedia.org/wiki/High-speed\\_rail\\_in\\_the\\_United\\_Kingdom](https://en.wikipedia.org/wiki/High-speed_rail_in_the_United_Kingdom)

9. The **Port of Felixstowe** is the largest and busiest container port in Great Britain and the UK. It is also one of the largest in Europe.

<https://www.portoffelixstowe.co.uk/#/port>

10. The northernmost point is **Out Stack**, Shetland Islands

[https://en.wikipedia.org/wiki/List\\_of\\_extreme\\_points\\_of\\_the\\_United\\_Kingdom](https://en.wikipedia.org/wiki/List_of_extreme_points_of_the_United_Kingdom)

11. The southernmost settlement is **St Agnes**, Isles of Scilly

[https://en.wikipedia.org/wiki/List\\_of\\_extreme\\_points\\_of\\_the\\_United\\_Kingdom](https://en.wikipedia.org/wiki/List_of_extreme_points_of_the_United_Kingdom)

12. The easternmost point is **Lowestoft Ness**, Suffolk

[https://en.wikipedia.org/wiki/List\\_of\\_extreme\\_points\\_of\\_the\\_United\\_Kingdom](https://en.wikipedia.org/wiki/List_of_extreme_points_of_the_United_Kingdom)

13. The coldest ever temperature was -27.2 C° recorded at in **Braemar**, Aberdeenshire on 10 January 1982 a temperature matched in 1995 by Altnaharra in the Highlands.





<https://www.metoffice.gov.uk/research/climate/understanding-climate/weather-extremes-and-climate-change>

14. The largest National Park in the UK is the **Cairngorms National Park**, Scotland. The Park is 4528 km<sup>2</sup> in area, over twice the size the Lake District and Loch Lomond and the Trossachs.

<https://cairngorms.co.uk/discover-explore/facts-figures/>







## Copyright

©EDINA at the University of Edinburgh 2016

This work is licensed under a Creative Commons Attribution-Non Commercial Licence



## Acknowledgements

© CollinsBartholomew Ltd (2019) FOR SCHOOLS USE ONLY

© Crown copyright and database rights 2020 Ordnance Survey (100025252). FOR SCHOOLS USE ONLY.

Aerial photography © Getmapping plc. Contains OS data. FOR SCHOOLS USE ONLY.

Historic mapping courtesy of the National Library of Scotland. FOR SCHOOLS USE ONLY.

